

Guide To Classroom Technology

This guide covers classrooms that are used for general instruction.
It does not include labs, studios, or rehearsal spaces.

Standard Classroom Setup (PAC 100, Most Davidson classrooms, RTC classrooms, Science 100)	1
Before class	2
After class	2
Non-standard classroom technology	3
Art 130	3
Davidson 110	3
DeLoach 139A and 139B	3
GYM 100	4
GYM 104	4
LITC 100	4
LITC 228	4
LITC Boardroom (occasional instruction)	4
Music 101	4
Science 101	5
Science 103	5
Science 103A	5
Science 113	5
Science 116	5
Chromebook Carts	6
iPad Carts	6
Wireless Access and High-Density Access Points	6

Standard Classroom Setup (PAC 100, Most Davidson classrooms, RTC classrooms, Science 100)

Most classrooms are equipped with a computer (Windows operating system), projector, and Apple TV at the front of the room.

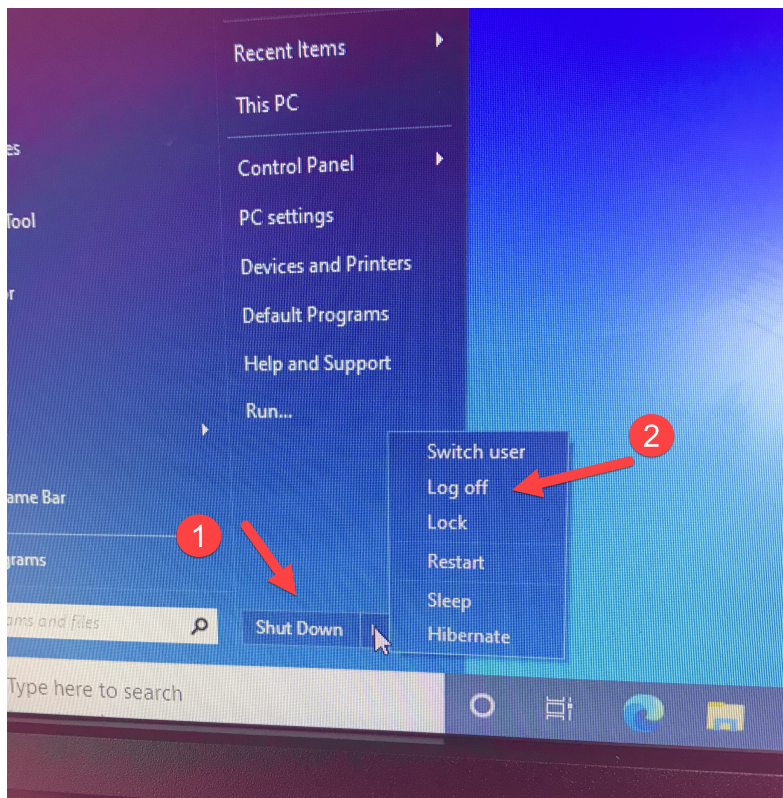
[Most classrooms have whiteboards; some have chalkboards.]

Before class

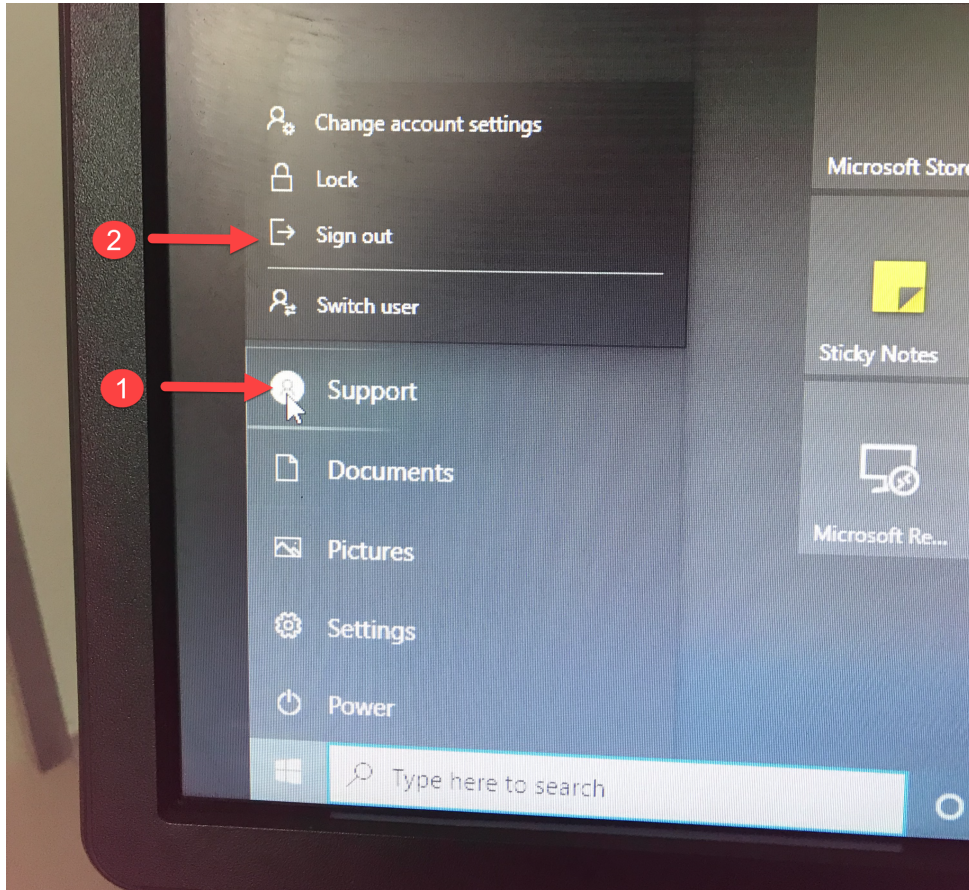
1. Turn on the desktop computer if it is not on.
2. Log in with your Coker credentials.
 - a. Enter your username **without the @coker.edu**
 - b. Enter your password.
 - c. **The first time you log into a specific computer, it will take several minutes to create your profile. Give yourself extra time.**
3. Make sure the monitor is turned on.
4. Turn on the projector using the small white remote.
5. Make sure the projector is set to the Input that you need.
[See this video on how to change the input.](#)
6. Which input do you need?
 - a. Using the computer = Computer
 - b. [Using an iPad to mirror to the AppleTV](#) = HDMI1 (or could be HDMI2)

After class

1. Erase the whiteboard/chalkboard out of courtesy for the next instructor.
2. If you used the Apple TV, [stop mirroring and return the projector to Computer.](#)
3. Log out of the computer. Leave it on for the next instructor.
 - a. Windows Classic Shell



b. Windows 10 Shell



Non-standard classroom technology

Art 130

Operates very much like a Standard Classroom, but has an iMac rather than a PC.

Davidson 110

This classroom has an automated screen/projector system at the rear of the room.
The computer is located at the front of the room.
There are whiteboards at both ends of the room.

1. [Davidson 110 Quick Start Guide](#)
2. [How to Mirror to the AppleTV using AirServer](#)

DeLoach 139A and 139B

These classrooms are equipped with a computer, SmartBoard, and projector at the front of the room..
Do not write on the SmartBoard with anything except a SmartPen.

These classrooms also have whiteboards on the side wall.

1. [DeLoach instructions](#) (also hanging on the wall near the rear of the classroom).
2. [How to Mirror to the AppleTV using AirServer](#)

GYM 100

Ask Dr. Suzanne Parker for a tutorial if you are assigned to this room.

GYM 104

Operates like a Standard Classroom.

However, you will need to turn on the Weltron audiobox on the floor if you need audio.

Ask Dr. Jim McLaughlin for a tutorial if you are assigned to this room.

LITC 100

LITC 100 is a computer lab with two screens at the front.

There is a small movable whiteboard at the front.

1. [LITC100 instructions](#)
2. [How to Mirror to the AppleTV using AirServer](#)

LITC 228

LITC 228 has a large-screen television at the front of the room.

There is a very small whiteboard to the left of the television.

1. Turn the computer on and log in.
2. Turn the television on with the grey LG TV remote.
3. Using the remote, select the appropriate input:
 - a. Computer = RGB-PC
 - b. AppleTV = HDMI2

LITC Boardroom (occasional instruction)

If you are using this space, make an appointment with IT well in advance of your event.

An IT Team member will show you how to operate the equipment in this room.

support@coker.edu

Music 101

Ask Dr. Graham Wood for a tutorial if you are assigned to this room.

[Music Recital Hall](#)

Use the link above for the basic instructions. However, we recommend that you consult with the Technical Theater and/or Music Faculty if you are assigned to this space.

Science 101

This classroom has a Promethean Panel with attached projector and a computer at the front of the room.

Do not write on the Promethean Board with anything except a Promethean Pen.

This classroom has whiteboards on the rear wall and a side wall.

1. Turn on the computer.
2. Use the remote to turn on the projector.
3. Use the input button to select the input that you need:
 - a. Computer = VGA1
 - b. AppleTV = HDMI2

Science 103

Science 103 operates like a Standard Classroom.

However, it is also a computer lab.

There is a screen at the front flanked by two whiteboards.

Science 103A

Science 103 A operates like a Standard Classroom.

However, it is also a small computer lab.

Instead of a screen, there is a Promethean Board at the front.

There is a small whiteboard to the left of the Promethean Board.

Our veteran math faculty are probably the most knowledgeable about this space.

Science 113

Science 113 has a Promethean Board at the front of the room.

There is a whiteboard on each side wall.

To operate the equipment:

1. Use the remote to turn on the Promethean Board.
2. Use the Source button to select the proper input:
 - a. Computer = VGA
 - b. AppleTV = HDMI1

Our veteran math faculty are probably the most knowledgeable about this space.

Science 116

Science 113 has a Promethean Board at the front of the classroom.

There is a whiteboard to the right of the Promethean board; there are two whiteboards along one side wall.

Turn on the computer/monitor/projector and log in as you would in a Standard Classroom.

Using the white remote, select the appropriate input as you would in a Standard Classroom.

Turn on the Weltron audio box if you are using something that requires sound.

The projector will project onto the Promethean Board

Our veteran math faculty are probably the most knowledgeable about this space.

Chromebook Carts

There are 3 Chromebook Carts with 25+ Chrombooks.

You can reserve a cart and get the keys at the Library Circulation Desk.

Each of the carts is stored in a different location: Library, Davidson, Science.

iPad Carts

There are 3 iPad carts with 10 iPads each.

You can reserve a cart and get the keys at the Library Circulation Desk.

Each of the carts is stored in a different location: Library, Davidson, Science.

Wireless Access and High-Density Access Points

Most classrooms have wireless access but it may not be sufficient for all attendees to connect at the same time.

The wireless access will show up on your device as “Coker Wireless.”

The code is “cobranet”.

The following classrooms have high-density wireless access points which should allow all attendees to connect simultaneously.

- Davidson 109
- Davidson 110
- Davidson 111
- Davidson 112
- DeLoach 139A
- DeLoach 139B
- Science 100
- Science 101
- Science 113

- Science 116